

# BERTUCCI

™

## PERFORMANCE FIELD WATCHES™

**ANALOG MODELS  
& FIELD COMBO**

OWNERS MANUAL

## Congratulations!

You are now the owner of a Bertucci™ Performance Field Watch.™ Every Bertucci™ watch has been carefully designed and manufactured from the best materials with a non-compromised set of premium features. This is the basis for our Promise Of Performance™ to you. Please carefully read this manual to familiarize yourself with your Bertucci field watch.

**BERTUCCI**  
™

Distinctive Performance For The Real World™

## Table of Contents:

Our Story – Your Watch	2
Durability by Design®	3
Bertucci™ DX3® watch bands	4-5
Models without date	6-7
Models with date	8-9
Instructions for A-2TC Field Combo	10-13
Water resistance	14
Care for your Bertucci™ field watch	15
Warranty information	16-17
Refurbishment program	18-19
Battery information	20
Thank you, In The Field With Bertucci	Inside backcover
Contact Us	Backcover

## Our Story – Your Watch:

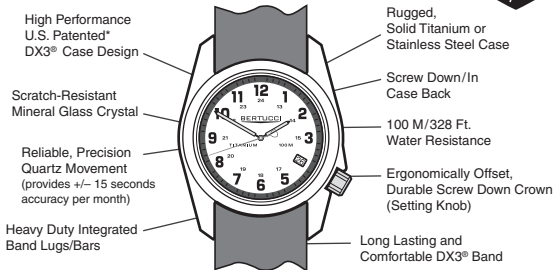
Our story is a simple one. It's about building a better watch. It's a Promise Of Performance™ that is derived from a belief that innovative design and attention to detail matter. It is this focus and integrity that drive us, an honest, true and authentic way.

We believe if a watch is done right, it connects with you... creating an emotional touch point that says something about you, a personal expression well suited to your active lifestyle.

Bertucci™ Performance Field Watches™ balance form and function, with an enduring style and rugged quality that are ready to survive the day to day challenges that come your way... whatever they may be.

## Durability by Design®:

When we create a watch, we study the ways in which it will be worn and used in the real world. As a result, every Bertucci™ watch is carefully designed, engineered and manufactured with a non compromised selection of materials and features.



\*U.S. Pat. No: 488388, 488075, 488724 and other patents pending

## Bertucci™ DX3® watch bands:

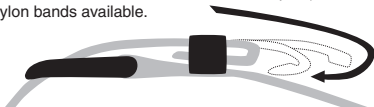
The performance band for Bertucci™ Performance Field Watches.™ Our U.S. patent pending DX3® bands are a unique design made for only Bertucci™ watches.

Note: Other replacement bands are not compatible. Bertucci™ DX3® bands are long lasting, comfortable and highly durable. Bertucci™ DX3® bands are available in a variety of materials, colors, and sizes for your watch.

### Three high performance materials to choose from:

- 1 Leather** – Long lasting full grain leather bands with stainless steel hardware.
- 2 Tridura™** – Highly durable, moisture, mildew and odor resistant U.S. patented polyurethane coated webbing with powder coated steel buckle & keeper.
- 3 Nylon** – Heavy duty 2-ply military spec. nylon strap with all-metal hardware.

The patent pending nylon band features a design that allows the excess band material to be folded & “tucked-under” the keeper (see illustration). Short and long nylon bands available.



## Bertucci™ DX3® watch bands sizing:

See case back engraving for model/case type.

Band Size:	Model/Case:
5/8" band	M-1S
3/4" band	A-1S, C-1T
7/8" band	A-2T, A-2S, A-3T, B-1T, D-1T, G-1T
1" band	A-4T

To see a full listing of all bands available for your watch go to [www.bertucciwatches.com](http://www.bertucciwatches.com) or your authorized dealer.

### To order:

Email us at [askenzo@mhbertucci.com](mailto:askenzo@mhbertucci.com) to use paypal or call 866-672-6442 or 866-524-7877.

## Setting instructions: Models without date

If packaging clip is on the crown (setting knob), please remove. Note:

Crown may already be in the out position or unscrewed when new.

**Step 1:** Turn crown counter clock-wise to unscrew crown (fig. 1).

The crown is completely unscrewed when it turns freely.

**Step 2:** Gently and carefully pull crown out to stop second hand (fig. 2).

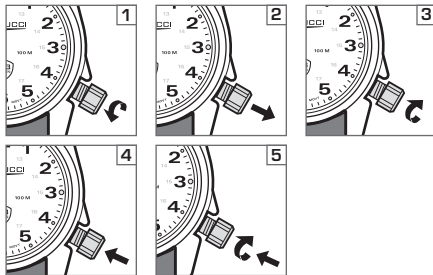
**Step 3:** Turn crown, moving hour and minute hands to set the desired time (fig. 3).

**Step 4:** Push crown in to re-start second hand (fig. 4).

**Step 5:** Push in and turn crown clock-wise to engage threads. Continue to turn clockwise to firmly screw down crown. Do not overtighten (fig. 5).

## Models: A-1S, A-2S, A-2T, A-3T, A-4T, M-1SE

See case back engraving for model/case type.



**Note:** Please screw down crown (setting knob) to ensure water resistance and maintain warranty. Do not overtighten.

## Setting instructions: Models with date

If packaging clip is on the crown (setting knob), please remove.

Note: Crown may already be in the out position or unscrewed when new.

**Step 1:** Turn crown counter clock-wise to unscrew crown (fig. 1).

The crown is completely unscrewed when it turns freely.

**Step 2:** Gently and carefully pull crown halfway out, you will feel a “click”, there will be a bit of feel here (fig. 2).

**Step 3:** Turn crown either clock-wise or counter clock-wise (depending on the model) to advance the date, continue to advance the date to yesterdays date (fig. 3).

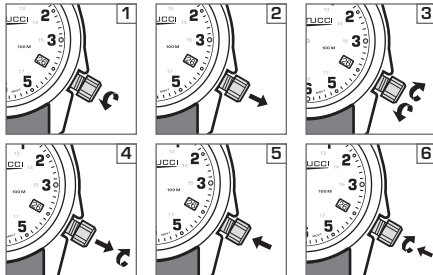
**Step 4:** Carefully pull the crown out a bit further for a second “click”. Turn the crown either clock-wise or counter clock-wise (depending on the model) to cycle the time past midnight, you will see the date advance to todays date. Continue to advance to set the desired time, this will ensure the AM/PM is correct (fig. 4).

**Step 5:** Push crown in to re-start second hand (fig. 5).

**Step 6:** Push in and turn crown clock-wise to engage threads. Continue to turn clockwise to firmly screw down crown. Do not overtighten (fig. 5).

## Models: A-2T(E), B-1T(E), C-1T, D-1T(E), M-1S

See case back engraving for model/case type.

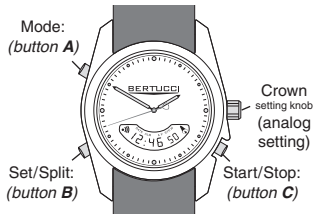


**Note:** Please screw down crown (setting knob) to ensure water resistance and maintain warranty. Do not overtighten. Date will need to be reset for months not ending with 31 days.

## Instructions for A-2TC Field Combo:

### Functions:

- 12/24 hour time (analog dial)
- 2nd time zone (digital time, 12/24 hour display)
- Stopwatch/Chrono (STP.W) (1 hour capacity, split time, 1/100 sec)
- Day, Date (DATE)
- Alarm (ALM)
- Hourly chime

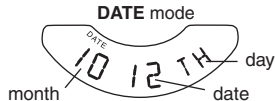


### Mode Indicators:



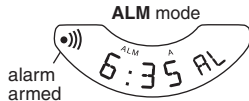
### Setting date:

- push button **A** and select **DATE** mode
- push & hold button **B** until date flashes
- push button **C** to select date
- push button **B** for month
- push button **C** to select month
- push button **B** for day
- push button **C** to select day
- push button **B** to lock settings



### Setting alarm:

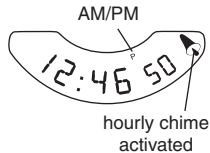
- push button **A** and select **ALM** mode
- push & hold button **B** until hour flashes
- push button **C** to select hour
- push button **B** for minute
- push button **C** to select minute
- push button **B** to lock settings
- push button **C** to arm/disarm alarm (•)))



Note: Mode indicators flash to indicate the mode you are in.

### Setting digital time:

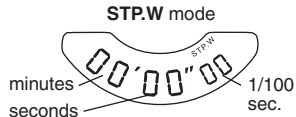
- push button **A** and select **2nd time** mode
- push & hold button **B** until seconds flash
- push button **C** to reset seconds
- push button **B** for minute
- push button **C** to select minute
- push button **B** for hour
- push button **C** to select hour cycle through for  
A for am, P for pm
- push button **B** for 12 or 24 hour time
- push button **C** to select 12 or 24 hour time
- push button **B** to lock settings
- press & hold button **C** & press **B** to turn  
hourly chime on or off



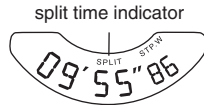
See page 6 to set analog (hands) time. Digital time is not synchronized with analog time, as the timing systems operate independently.

### Using stopwatch/chronograph:

- push button **A** and select **STP.W** mode.
  - push button **C** to start timing
  - push button **C** to stop timing
  - push button **B** to reset stopwatch.
- For splits:
- push button **B** during timing for splits



Note: Stopwatch/chronograph has 1 hour capacity, it will cycle over after 1 hour and keep running restarting from 00:00:00.





## Water resistance:

Your Bertucci™ watch has been carefully designed and tested to be used in water. The case material, screw down crown, and case back are premium features to improve water resistance performance. Bertucci watches are engineered to withstand water pressure to 160 P.S.I.A (equals immersion to 100 meters or 328 feet below sea level) if crown (setting knob) is screwed down.

- 1 Never adjust crown (setting knob) when watch is wet or submerged in water.
- 2 Never wear the watch unless the crown (setting knob) is completely screwed down. Don't forget to tighten crown (setting knob) down after setting time as water will leak and damage movement.
- 3 The watch is water resistant only as long as crystal, crown and case are intact and undamaged.
- 4 Your Bertucci™ watch has been designed to be worn during activities in which the watch will be exposed to water and submersion in water. However, the watch is not a professional diver watch and should not be used for diving.
- 5 Do not operate push buttons (if equipped with) when watch submerged in water.

## Care for your Bertucci™ field watch:

- 1 Never wear the watch unless the crown (setting knob) is completely screwed down. Do not overtighten crown.
- 2 We recommend rinsing your watch and band with fresh water after exposure to salt water, chlorinated pools, hot tubs, whirlpools, chemicals or soil loads.
- 3 Never adjust crown (setting knob) when watch is wet or submerged in water.
- 4 Keep watch clean and free of debris, especially around the crown area. Use mild soap and a soft brush to clean, keep crown (setting knob) screwed down when cleaning.
- 5 If leather band is submerged in water for an extended time period, allow it to air dry.
- 6 Replace band if excessively worn (see page 5).
- 7 If watch has stopped bring it to a local jeweler or a professional watch service shop for battery replacement (see page 20).
- 8 Do not expose your watch to intense magnetic fields such as loudspeakers and other electromagnetic devices.
- 9 When setting your watch, handle the crown (setting knob) gently as this is a precision device.
- 10 Do not subject your watch to severe impact.

## Warranty information:

Every Bertucci™ watch is carefully designed, manufactured and inspected to ensure it meets our Promise Of Performance™ to you. This is backed up by a 3 year warranty on the watch head and 1 year on the band. If defective, please return to the dealer or send to us for warranty replacement.

In the event of a malfunction, please follow these steps (for band only, go to directly to **Step 4**).

**Step 1** Determine whether the watch is in warranty. If the watch is in warranty, please follow the remaining steps. If it is NOT in warranty, please refer to the **Refurbishment Section** (pg. 18).

**Step 2** Determine whether the watch has been overly abused. If not overly abused, please follow the remaining steps. If the watch IS overly abused (for example, crown is not screwed down and watch is water damaged, or there is visual evidence of high impact to case or crystal), please refer to the **Refurbishment Section** (pg. 18).

**Step 3** Please have the battery checked by a local jeweler or professional watch service shop. Most malfunctions are simply battery related. If the battery is good, and watch is still not functioning correctly, please follow next **Step 4**. If battery is bad, please refer to **Battery Replacement Section** (pg. 20).

**Step 4** Please return the defective watch or band to the dealer or send to us for exchange. Please send a note explaining the malfunction or use the Warranty Coupon (available on our web site: [www.bertucciwatches.com](http://www.bertucciwatches.com))

Please contact us with any questions at **866-672-6442 / 866-524-7877** or email us at [askenzo@mhbertucci.com](mailto:askenzo@mhbertucci.com).

Return note with defective watch to include: name and address, phone number, description of watch (ex. A-2T nylon) and description of malfunction.

Send the malfunctioning watch to:  
**MH Bertucci, Inc – Warranty Dept.**  
**P.O. Box 377**  
**Metropolis, IL 62960 USA**

## Out of Warranty Refurbishment Program:

Should the watch be out of warranty (more than 3 years old), damaged severely, deemed overly abused, or water damaged as a result of not screwing the crown down, we offer our refurbishment program. The way it works is as follows:

- 1 Send us the out of warranty or damaged watch head to the below address. Just the watch head, keep your band.
- 2 Include a note or use the Refurbishment form (available at our web site: [www.bertucciwatches.com](http://www.bertucciwatches.com)) advising nature of the problem (if known).
- 3 The note should also include your name, return address and phone number (see refurbishment form).
- 4 Check or money order made out to MH Bertucci, Inc. in the amount based on the refurbishment pricing, on page 19.
- 5 We will send out a fully refurbished watch to your shipping address.
- 6 The refurbished watch includes:
  - refurbished, recertified, and cleaned watch head.
  - new band • new battery • 1 year warranty
- 7 The refurbished watch sent back may include some minor or cosmetic scratches to the case only. You may not get back your exact watch.

### Refurbishment Pricing: (add \$9 for shipping)

A-1S – \$48	A-3T, B-1T, C-1T, D-1T – \$85
A-2S, M-1S – \$54	A-2T (w/10 year Li Battery) – \$90
A-2T, M-1SE (w/EL light) – \$60	A-3T (w/sub second) – \$90
A-2TE, B-1TE, D-1TE (w/EL light) – \$82	A-4T – \$90
A-2TC Field Combo – \$82	G-1T Durato – \$115
A-2T Vintage, High Polish – \$85	Tritium light styles – \$190

Send your watch to:

**MH Bertucci, Inc – Refurbishment Dept.**  
**P.O. Box 377**  
**Metropolis, IL 62960 USA**

## Battery information:

Bertucci™ watches use common batteries that are readily available. The case back is engraved with the model/case and battery type. Batteries should be replaced by a local jeweler or professional watch service for a moderate price. Do not attempt to remove the case back as it requires a special tool and skills. Proper replacement of batteries is critical to ensure the long life of your Bertucci™ field watch. Actual battery life may vary based on environmental factors and usage pattern. Replacement battery brands may have different battery numbers, check battery equivalency reference.

### Estimated Battery Life:

A-1S, A-2S, M-1S, A-2T – 3 year

A-2TE, B-1TE, D-1TE, M-1SE (w/EL light), – 2 year

A-2TC Field Combo – 2 year

A-2T Vintage, A-2T High Polish, – 5 year

A-3T, A-4T, B-1T, C-1T, D-1T – 5 year

A-3T Vintage (w/sub second) – 2 year

G-1T Durato – 5 year

Lithium battery equipped styles – 10 year

## Thank You!

Thank you for your purchase of a Bertucci™ Performance Field Watch.™ You've made an excellent choice. You'll be pleased with your Bertucci™ watch for years to come.

### In The Field With Bertucci™

We would like to hear from you, so please let us know your stories, testimonials, or experiences you've had using your Bertucci™ field watch.

Please let us know of any questions or comments you may have.



enzo

Send responses to: [askenzo@mhbertucci.com](mailto:askenzo@mhbertucci.com)



contains post  
consumer material

© 2010 MH BERTUCCI, INC.  
ALL RIGHTS RESERVED  
PRINTED IN THE U.S.A.

## Contact Information:

[askenzo@mhbertucci.com](mailto:askenzo@mhbertucci.com)

866-672-6442 • 866-524-7877

[www.bertucciwatches.com](http://www.bertucciwatches.com)

Please retain this owners manual for future reference.

rev.5